

DIGITIZING THE SUPPLY CHAIN



“On average, companies that aggressively digitize their supply chains can expect to boost annual growth of **earnings** before interest and taxes by **3.2 percent** – the largest increase form digitizing any business area – and annual **revenue growth** by **2.3 percent** .”

McKinsey&Company

“**Adopt a comprehensive approach to technology**”

Make sure all the links are connected via unified technology. That means integrating all relevant functions into the supply chain to allow for data flows and visibility.

“How A Digitized Supply Chain Can Give You A Competitive Edge”, *Forbes*, May 25, 2017



“Companies with highly digitized supply chains and operations can expect **efficiency gains** of **4.1%** annually, While **boosting revenue** by **2.9% a year**”



Elemica Digital Transformation Solutions



Elemica Buy

Onboard your raw material suppliers to optimize your procure-to-pay process, reducing inventory levels and increasing productivity

Products:

- Purchase Order Management
- Quicklink Email P2P
- Vendor Managed Inventory
- Delivery Forecast
- Invoice Compliance



gsqa

Elemica Quality

Improve quality and simplify compliance. Create information from COAs to drive decisions and improve processes.

Products:

- e-COA® Management
- Finished Goods Traceability
- Test Results and Graphics
- Pre-ship authorization
- Regulatory Reporting



Elemica Sell

Automate your complete order-to-cash process to reduce operating expenses, optimize working capital, and improve sales performance

Products:

- ENRICH
- Sales Order Management
- Customer Portal Assistant
- Quicklink Email SELL
 - OCR Module
- VMI & Delivery Schedule
- Invoice Compliance



Elemica Move

Collaborate with all of your logistics service providers to reduce freight costs, improve productivity and maintain shipper-of-choice status.

Products:

- Transport Execution
- Quicklink Email Move
- Freight Cost Management
- Terminal & Warehouse Visibility
- Timeslot Management



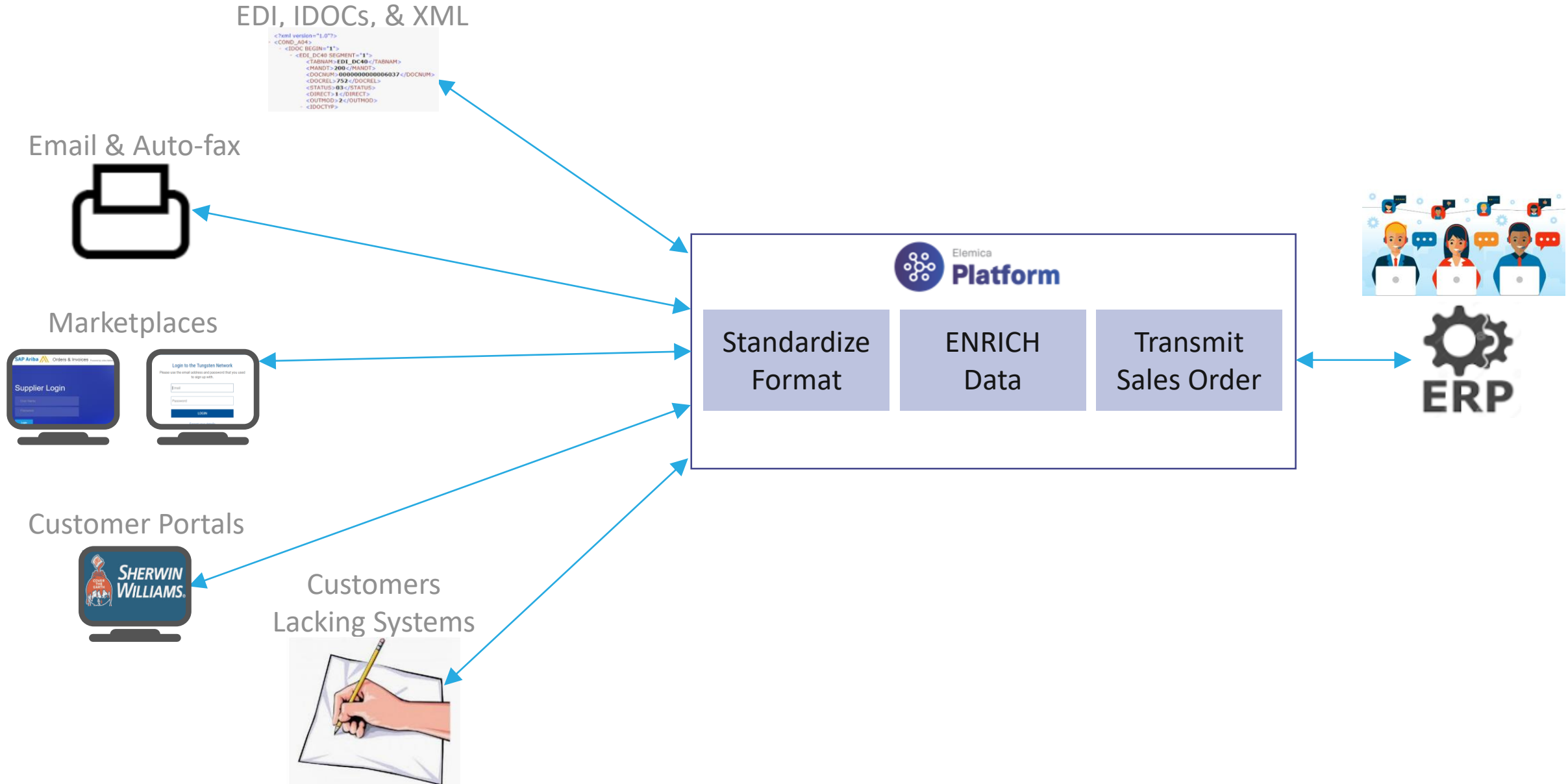
Elemica See

Unleash the power of a digital supply chain with visibility and exception management of your order-to-cash and procure-to-pay processes.

Products:

- Pulse
- Trace
- Risk

Elemica's Multi-Channel Approach For Customers

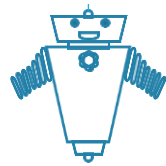


Customer Portal Assistant

Available Now



Customers



PORTAL BOT



API Interconnects
for Market Places



- ## Features
- ✓ No need to go websites for orders
 - ✓ Reduce errors, accelerate payments
 - ✓ Increase CSR job satisfaction
 - ✓ Suppliers realize a 25% reduction in AR costs and 8.9% lower DSO*
 - ✓ Less IT cost and pain.
 - ✓ No need for client to create, maintain, and staff a cXML infrastructure
 - ✓ Less IT focused on non-differentiating work
 - ✓ Lower on-going support costs

Data Acquisition Approaches

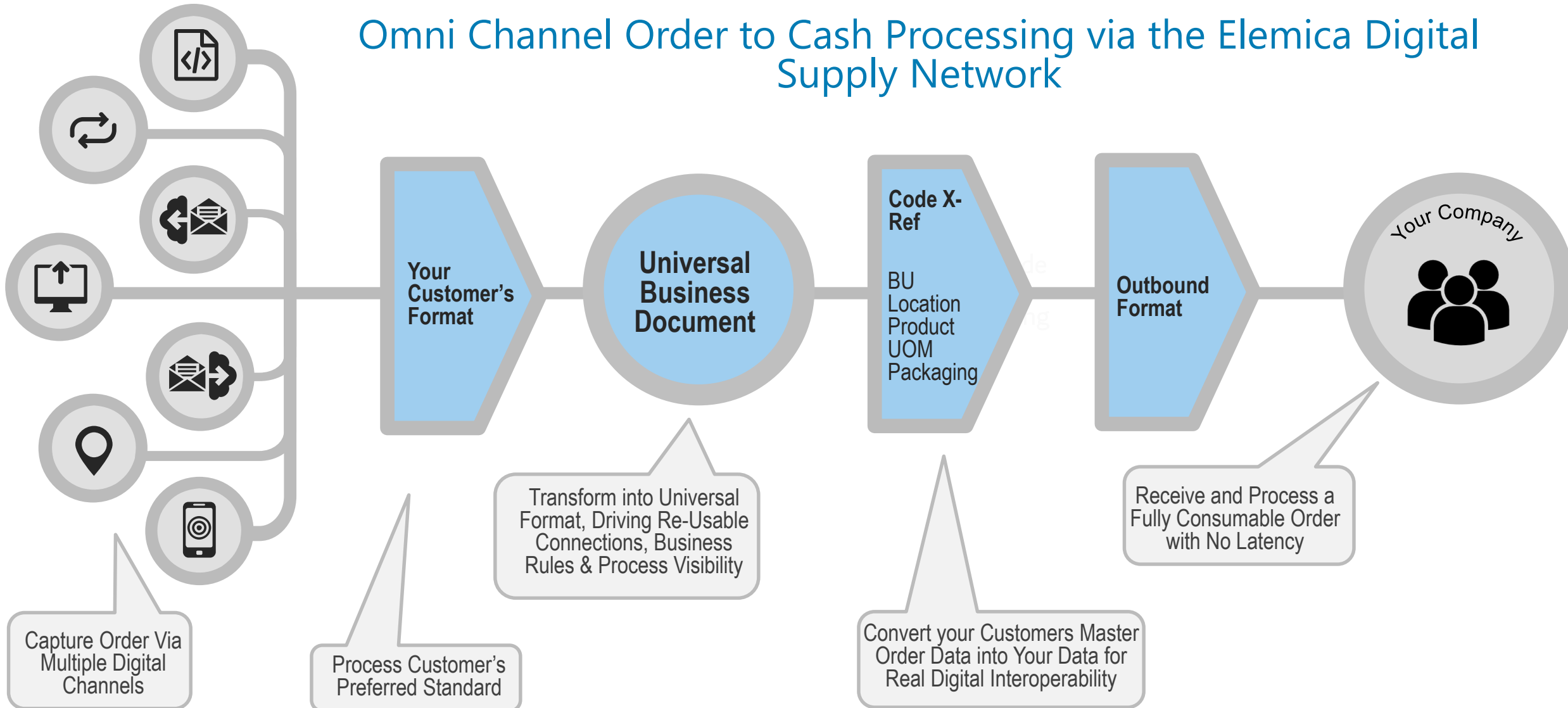
Elemica is a Network:
“Connect Once, Connect to All”



- Elemica supports multiple data acquisition methods.
- No one integration approach is sufficient

Customer Expectations

Omni Channel Order to Cash Processing via the Elemica Digital Supply Network



Supply Chain Pulse



Supply Chain Pulse combines network data with a flexible business process framework to model and monitor your business network

Pulse Analytics
ben torkian

8
WARNINGS

View As

BUYER
SUPPLIER

Apply Reality Check™

ON
OFF

Search Profile

CURRENT None

Delivery Days From Today

− 30
+
90

Buyer

All

Supplier

All

Ship To

All

Product

All

SEARCH

12 ORDER LINES

WARNINGS

No Warning (4)
 Shipment (2)

Order Confirmation (1)
 Booking (5)

BUYER	SUPPLIER	DELIVERY	ORDER LINE	PRODUCT	SHIP TO	WARNING TYPE	WARNING DESCRIPTION	STATUS
Crocodile Corp.	Eagle SA	2017-05-05	4930735712 L4	Ethanol (C2H6O)	Amsterdam	Booking	Expected Late	Shipped
Crocodile Corp.	Eagle SA	2017-05-05	4930735711 L1	Ethanol (C2H6O)	Amsterdam	Booking	Expected Late	Shipped
Aardvark AG	Eagle SA	2017-05-05	4930735711 L4	Dihydrogen Monoxide (DHMO)	Frankfurt	Booking	Expected Late	Shipped
Aardvark AG	Eagle SA	2017-05-05	4930735712 L1	Dihydrogen Monoxide (DHMO)	Frankfurt	Booking	Expected Late	Shipped
Crocodile Corp.	Eagle SA	2017-05-05	4930735712 L2	Ethanol (C2H6O)	Amsterdam	Booking	Expected Late	Shipped
Crocodile Corp.	Eagle SA	2017-05-15	4930735715 L1	Sodium Chloride (NaCl)	Amsterdam	Shipment	Expected Late	Shipped

	MILESTONE	TIMESTAMP	CARRIER	BASELINE VALUE	COMPARISON VALUE
✓	Order Created	2017-03-13 07:58:58 UTC		Requested Quantity: 20000 Kilogram(s) Requested Delivery Date: 2017-05-15	-
✓	Order Confirmed	2017-03-13 14:58:58 UTC		Requested Quantity: 20000 Kilogram(s) Requested Delivery Date: 2017-05-15	Confirmed Quantity: 20000 Kilogram(s) Confirmed Delivery Date: 2017-05-15
✓	Transport Requested	2017-03-15 10:45:58 UTC	Tuna Worldwide	Confirmed Delivery Date: 2017-05-15	Booking ETA: 2017-05-15
✓	Vessel Departed	2017-03-20 08:58:58 UTC	Tuna Worldwide	Booking Port of Loading ETD: 2017-04-21	Status Port of Loading ATD: 2017-04-21
✗	Vessel ETA	2017-03-30 14:58:58 UTC	Marine Traffic API	Booking Port of Discharge ETA: 2017-05-11	Status Port of Discharge ETA: 2017-05-15

⚠ VESSEL IS EXPECTED TO ARRIVE 4 DAYS LATE.

Dismiss Alert

Crocodile Corp.	Eagle SA	2017-05-15	4930735715 L4	Ethanol (C2H6O)	Amsterdam	Shipment	Expected Late	Shipped
-----------------	----------	------------	---------------	-----------------	-----------	----------	---------------	---------

Search by Shipment #

SEARCH

67 Shipments

STATUS: On Time (65) No Data (0)
 Expected Late (2)
 Late (0)

SHIPMENT NUMBER	BUYER	TARGET DELIVERY	ACTIVITY	STATUS
10000012234	Gotham Company	2017-01-12 08:32:35 UTC	In Transit	Expected Late

⚠ Shipment is two hours behind schedule.

ACTIVITY

DETAILS

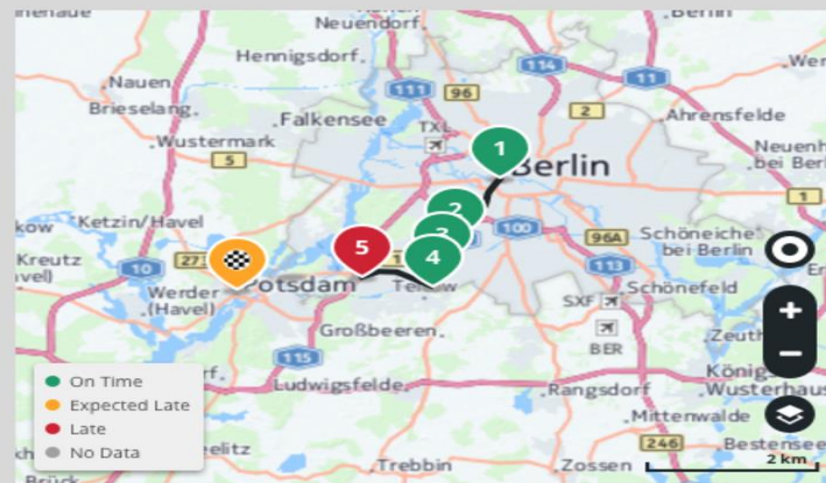
- 1 ▶ Depart ✓ 2017-01-12 05:52:35 UTC
- 2 ▶ In-Transit ✓ 2017-01-12 06:05:35 UTC
- 3 ▶ Loading ✓ 2017-01-12 06:06:35 UTC
- 4 ▶ In-Transit ✓ 2017-01-12 06:15:35 UTC
- 5 ▼ In-Transit **LATE** 2017-01-12 08:32:35 UTC

52.4406° N, 13.0645° E

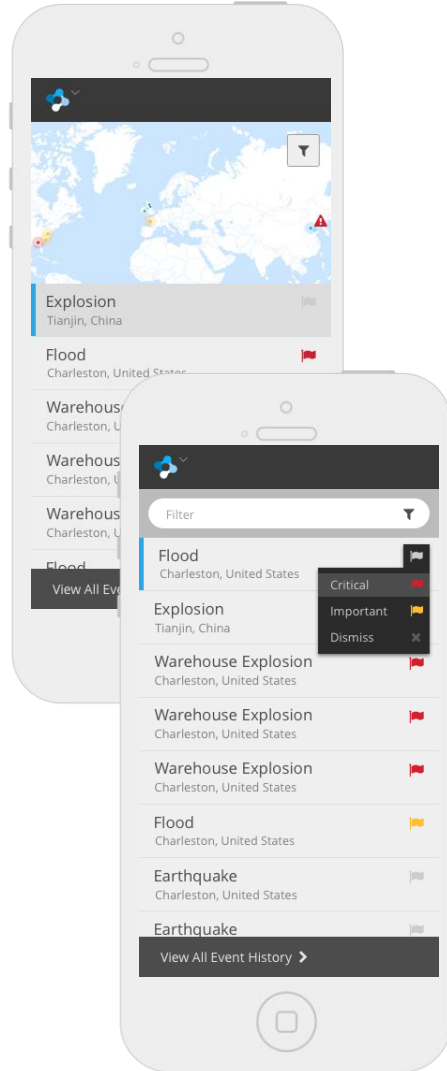
REQUESTED ETA 2017-01-12 06:32:35 UTC
 ESTIMATED ETA 2017-01-12 06:32:35 UTC
ACTUAL ETA 2017-01-12 08:32:35 UTC

Delivery Note #01023393533

Biosperse XD4107 25%	8 DR
Biosperse XD4107 25%	8 DR
Biosperse XD4107 25%	8 DR



Elemica Supply Chain Risk Monitor



Elemica
Home Risk Visibility

Filter

- Explosion
Tianjin, China
- Flood
Charleston, United States
- Warehouse Explosion
Charleston, United States
- Warehouse Explosion
Charleston, United States
- Warehouse Explosion
Charleston, United States
- Flood
Charleston, United States
- Earthquake
Charleston, United States
- Earthquake
Charleston, United States
- Earthquake
Charleston, United States
- Earthquake
Charleston, United States
- Earthquake
Charleston, United States

View All Event History >

Elemica
Home Risk Visibility

Filter

- Flood
Charleston, United States
- Warehouse Explosion
Charleston, United States
- Warehouse Explosion
Charleston, United States
- Warehouse Explosion
Charleston, United States
- Flood
Charleston, United States
- Earthquake
Charleston, United States
- Earthquake
Charleston, United States
- Earthquake
Charleston, United States
- Earthquake
Charleston, United States
- Earthquake
Charleston, United States

View All Event History >

Tianjin Port
Tianjin, China

At Location Incoming Outgoing News

EXPLOSION 12 Feb 2016

Massive explosions rock Chinese city of Tianjin

Explosions shook the Chinese city of Tianjin late Wednesday, killing more than 500 people, state media said.

Elemica
Home Risk Visibility

Tianjin Event Impact Overview [Back to Map >](#)

NETWORK IMPACT

- Chem X Plant
Qingdao, China
- ChemSupply**
Frankfurt, Germany
- Chemtech
- 2nd Tier Plant
- 2nd Tier Plant

Active Supply at Risk

Purchase Orders (next 30 days)

DIRECTION	COMPANY	PRODUCT ID	QNT.	CITY	DATE
Departing	ChemSupply	45001231234 L 10 / TIO2	20,000 KG	Frankfurt	Jan 12, 2016
Arriving	ChemSupply	45021231111 L10 / TIO2	20,000 KG	San Louis Potosi	Jan 16, 2016

Bookings (next 30 days)

BOOKING #	CARRIER	FORWARDER	# OF CNTRS	PRODUCT	TOTAL WT.
Booking#123	MAERSK	DHL	3	TIO2	60,000 KG

Containers at Location

CONTAINER #	PRODUCT	WEIGHT
MAEU123456	TIO2	20,000 KG

LANE IMPACT

Tianjin ↔ Frankfurt

ACTIVE SUPPLY RISK SUMMARY

By Location/Product

Frankfurt TIO2 40,000KG

San Louis Potosi TIO2 20,000KG

San Louis Potosi Resin1 20,000KG

By Product

TIO2 60,000KG

Resin1 20,000KG

Visibility Requires Data to be “Digitally” Linked



- Customer Order “SO #1234”
- Shipment “Booking Order # 3456”
- Carrier Status “Truck #9110” and “Vessel #5690”

The screenshot shows the Elemica software interface. At the top, there are tabs for Pulse, Trace, and Analytics. Below is a search bar and a 'WARNINGS' section with filters for 'No Warning (5)', 'Booking (1)', and 'Shipment (2)'. The main area displays '3 ORDER LINES' in a table with columns for WARNING DESCRIPTION, STATUS, BUYER, SUPPLIER, ORDER LINE, DELIVERY, SHIP TO, and PRODUCT. Below the table is an 'ACTIVITY' log with a list of events such as 'Sales Order Created', 'Purchase Order Created', 'Purchase Order Confirmed', 'Sales Order Confirmed', 'Transport Requested', 'Shipped', 'Supplier Invoice', 'Shipment Arrived', and 'Customer Invoice', each with a timestamp. A 'WARNING' panel on the right shows a 'Most Recent Warning' with the message 'SHIPMENT ARRIVED 1 DAY LATE' and a 'Dismiss Warning' button.



Visibility Requires Data to be “Digitally” Linked

Customer Order “SO #1234” Customer Invoice #5678” and “#9012”
 Carrier “Booking Order # 3456” Freight Invoice #ABCD” and “#EFGH”
 Carrier Status “Truck #9110” and “Truck #5690” (GPS/EDI)



The screenshot shows the Elemica software interface. At the top, there are tabs for 'Pulse' and 'Trace', with 'Trace' highlighted in a red circle. Below the tabs is a search bar and a table of 5 shipments. The table columns include ON-TIME STATUS, STATUS, DELIVERY NOTE NUMBER, CARRIER, SHIPMENT NUMBER, PURCHASE ORDER NUMBER, PICKUP, DELIVERY, ORIGIN, and DESTINATION. Below the table is a map showing the shipment route, and an activity log with details like 'Arrived at Pick-up Location' and 'Departed Pick-up Location'.



Elemica Process Industry Companies

