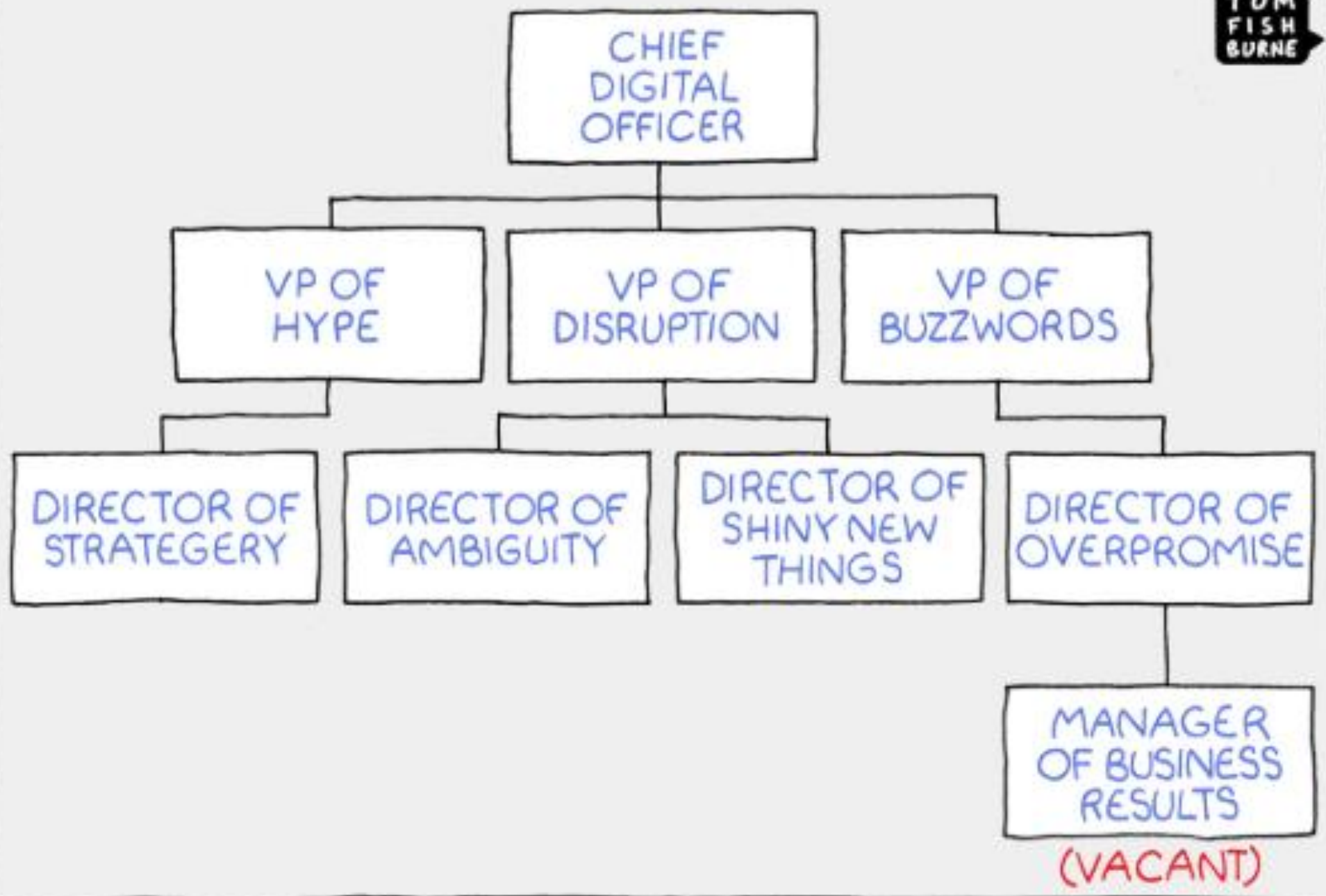


Cutting Through the Acronym Noise to Understand Digital Transformation

TOM
FISH
BURNE



Elemica Delivers Business Results via Digital Transformation

Elemica

\$500+ Billion
Commerce per Year

12,000+
Direct Material Partners

The Digital Supply Network

CLIENTS

App Users

ERP

API

PARTNERS

IoT

Data Providers

Transaction Networks

Customers

Suppliers

Logistics Service Providers



Elemica Digital Transformation Solutions



Elemica **Buy**

Onboard your raw material suppliers to optimize your procure-to-pay process, reducing inventory levels and increasing productivity

Products:

- Purchase Order Management
- Quicklink Email P2P
- Vendor Managed Inventory
- Delivery Forecast
- Invoice Compliance



gsqa

Elemica **Quality**

Improve quality and simplify compliance. Create information from COAs to drive decisions and improve processes.

Products:

- e-COA[®] Management
- Finished Goods Traceability
- Test Results and Graphics
- Pre-ship authorization
- Regulatory Reporting



Elemica **Sell**

Automate your complete order-to-cash process to reduce operating expenses, optimize working capital, and improve sales performance

Products:

- ENRICH
- Sales Order Management
- Customer Portal Assistant
- Quicklink Email SELL
 - OCR Module
- VMI & Delivery Schedule
- Invoice Compliance



Elemica **Move**

Collaborate with all of your logistics service providers to reduce freight costs, improve productivity and maintain shipper-of-choice status.

Products:

- Transport Execution
- Quicklink Email Move
- Freight Cost Management
- Terminal & Warehouse Visibility
- Timeslot Management

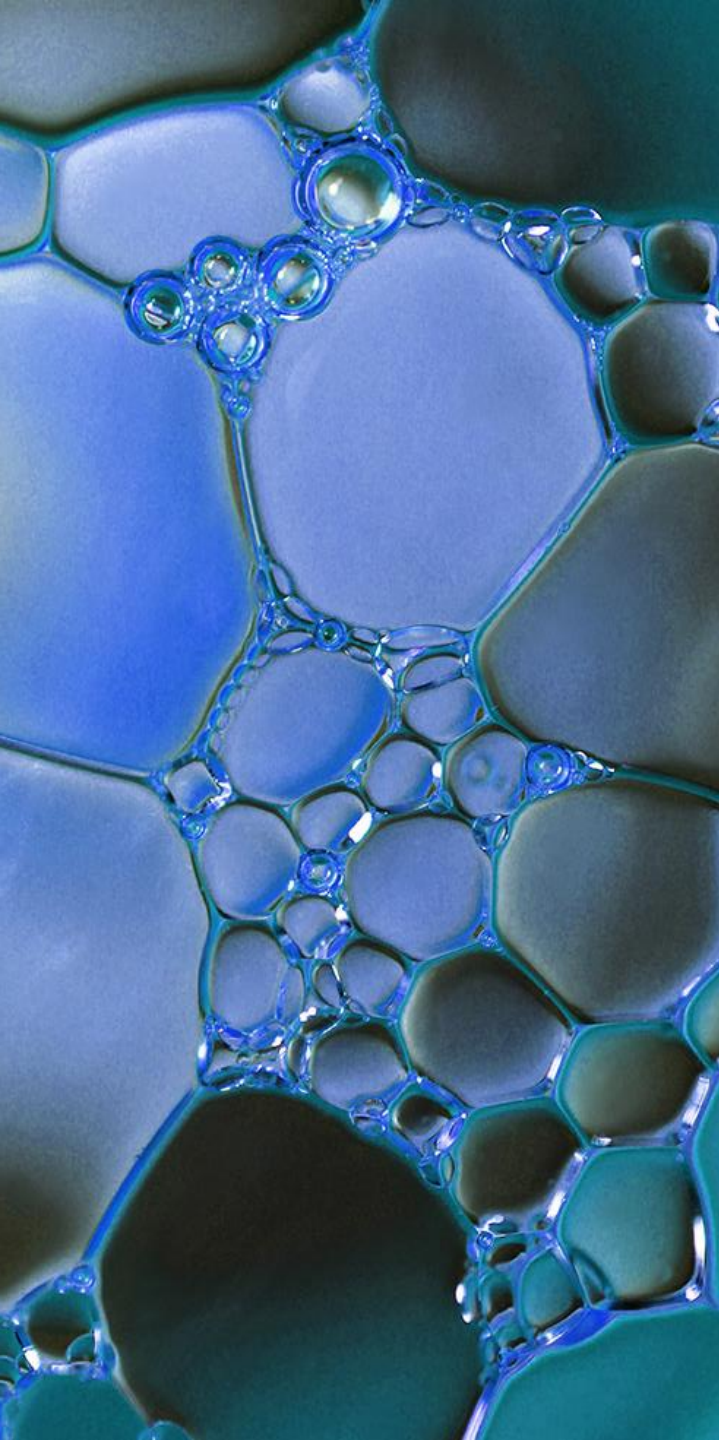


Elemica **See**

Unleash the power of a digital supply chain with visibility and exception management of your order-to-cash and procure-to-pay processes.

Products:

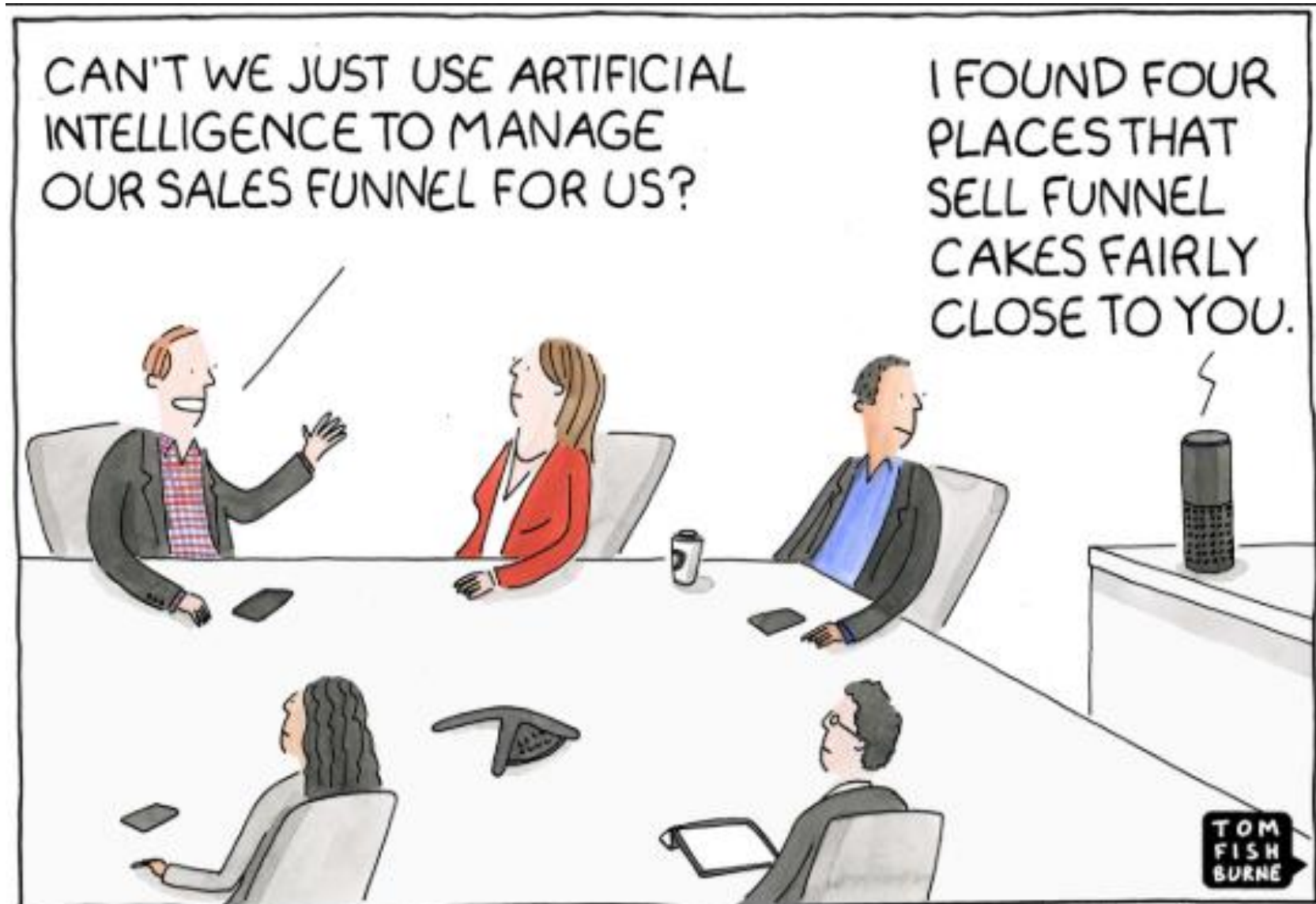
- Pulse
- Trace
- Risk



Agenda

- Hype? Reality?
- Acronyms and Buzzwords
- Results Driven Digital Transformation
- Q&A

Artificial Intelligence (AI)



OTIF Predictions using Machine Learning

AI for Business Results



Independent historical shipment variables tied to known outcomes

- PRODUCT CODE
- SHIP FROM CODE
- SHIP TO CODE
- CARRIER SCAC
- EQUIP TYPE
- WEEK # OF ARRIVAL
- DAY OF WEEK
- PICK UP VARIANCE



REALITY CHECK™	
ⓘ	Delay Possible: 24.90%
ⓘ	Delay Possible: 24.90%
ⓘ	Delay Possible: 24.90%
ⓘ	Delay Possible: 24.90%
<hr style="border-top: 1px dashed black;"/>	
⚠	Delay Likely: 93.00%
ⓘ	Delay Possible: 24.90%
✓	Delay Unlikely: 14.00%
✓	Delay Unlikely: 12.00%
✓	Delay Unlikely: 12.00%
ⓘ	Delay Possible: 24.90%
✓	Delay Unlikely: 6.00%

Real Time Order Visibility



The interface shows a 'SMART PALLET' tracking view with tabs for ACTIVITY, DETAILS, CONTACTS, GPS, and SMART PALLET. It displays data for four barcode items, including battery levels, signal strength, temperature, and delivery times. A map on the right shows the route from Amsterdam to Antwerpen.

Barcode	Battery	Signal	Temp	ETA
barcode 1	9%	10dB	43°F	2017-10-24 08:32:50
barcode 2	23%	30dB	56°F	2017-10-24 07:32:50
barcode 3	56%	50dB	40°F	2017-10-24 06:32:50
barcode 4	87%	90dB	23°F	2017-10-24 05:32:50

The main dashboard shows 52 shipments and a list of 9 shipments with columns for ON-TIME STATUS, STATUS, SHIPPER, CARRIER, SHIPMENT NUMBER, PICKUP, DELIVERY, ORIGIN, and DESTINATION. It includes a search profile, delivery days, and a detailed view of a shipment route from Antwerpen to Leuna OT Koteschitz.

ON-TIME STATUS	STATUS	SHIPPER	CARRIER	SHIPMENT NUMBER	PICKUP	DELIVERY	ORIGIN	DESTINATION
Expected Late	Delivered	Vining Eco Products	Triglav Carriers (STG46...	DL09099754	2018-08-14 00:00:00	2018-08-15 15:00:00	Amsterdam	Leuna OT Koteschitz
Expected Late	En Route	Acme Specialty Products	Haribo Trucking (STG40000...	TST0157358	2018-08-13 00:00:00	2018-08-16 17:00:00	Antwerpen	Birmo-jih-Dohni Herspice

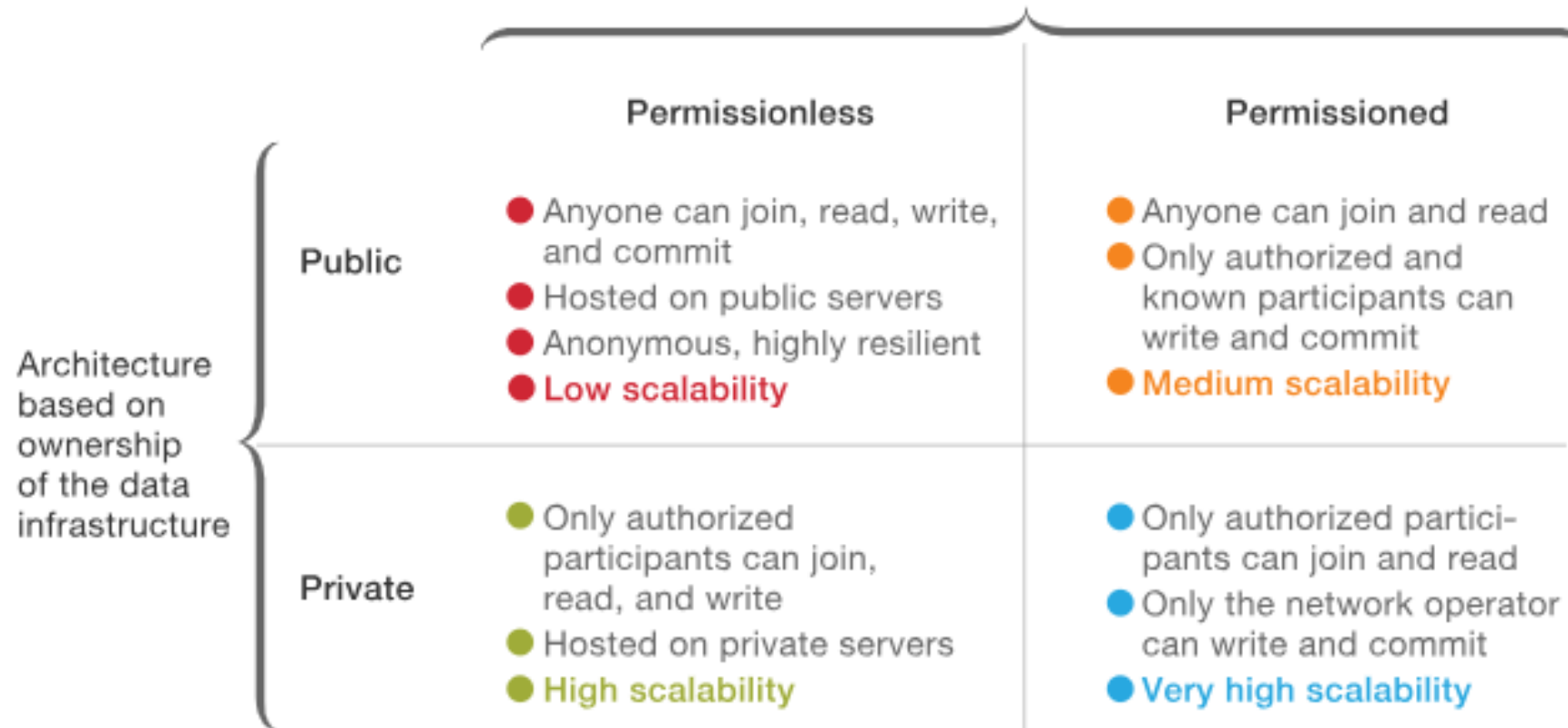
Features

- ✓ Smart pallet tracking
- ✓ Predictive ETAs
- ✓ GPS (IoT) Tracking
- ✓ Batch traceability

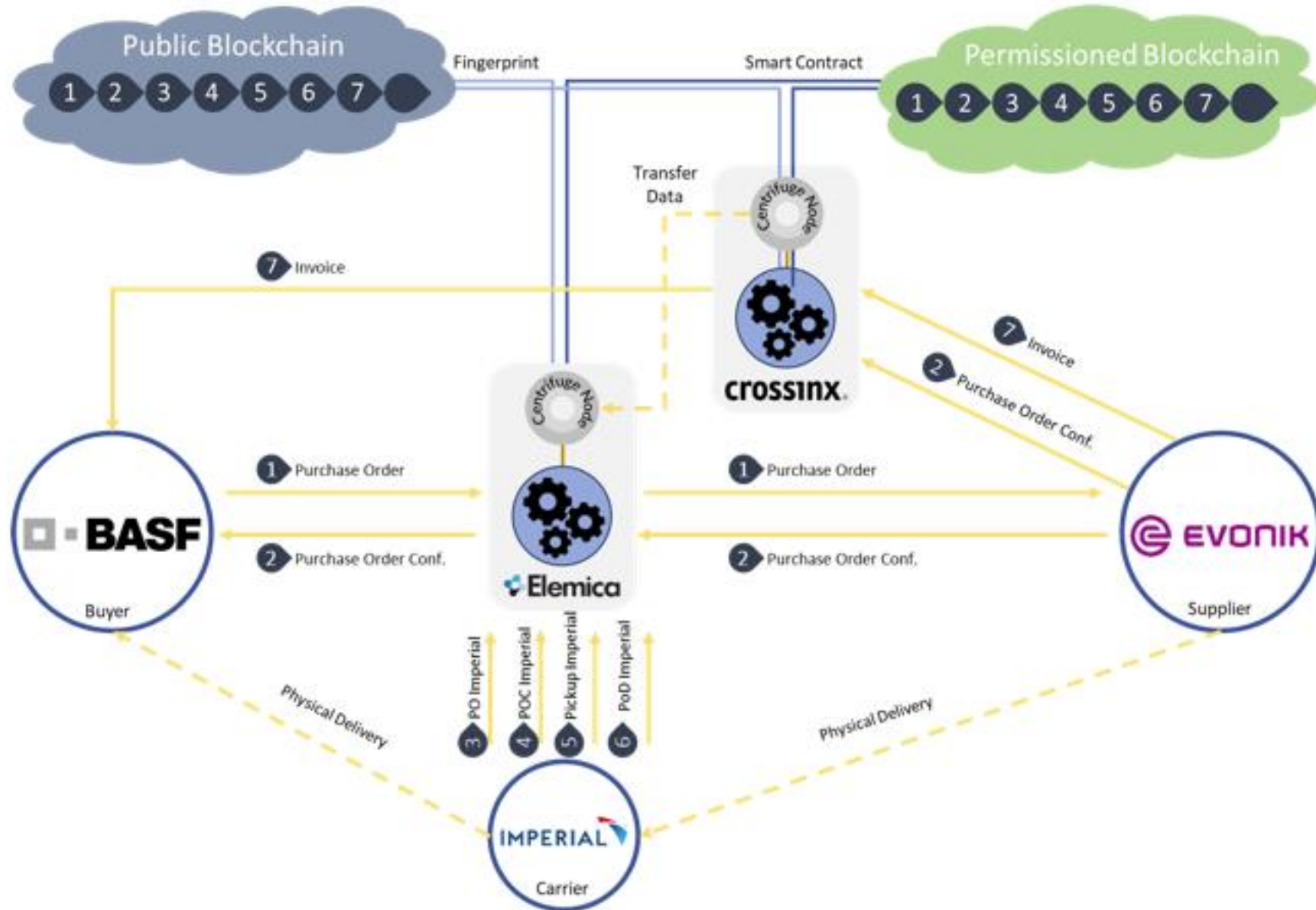
Blockchain

Blockchain-architecture options

Architecture based on read, write, or commit permissions granted to the participants



Elemica Blockchain Pilot

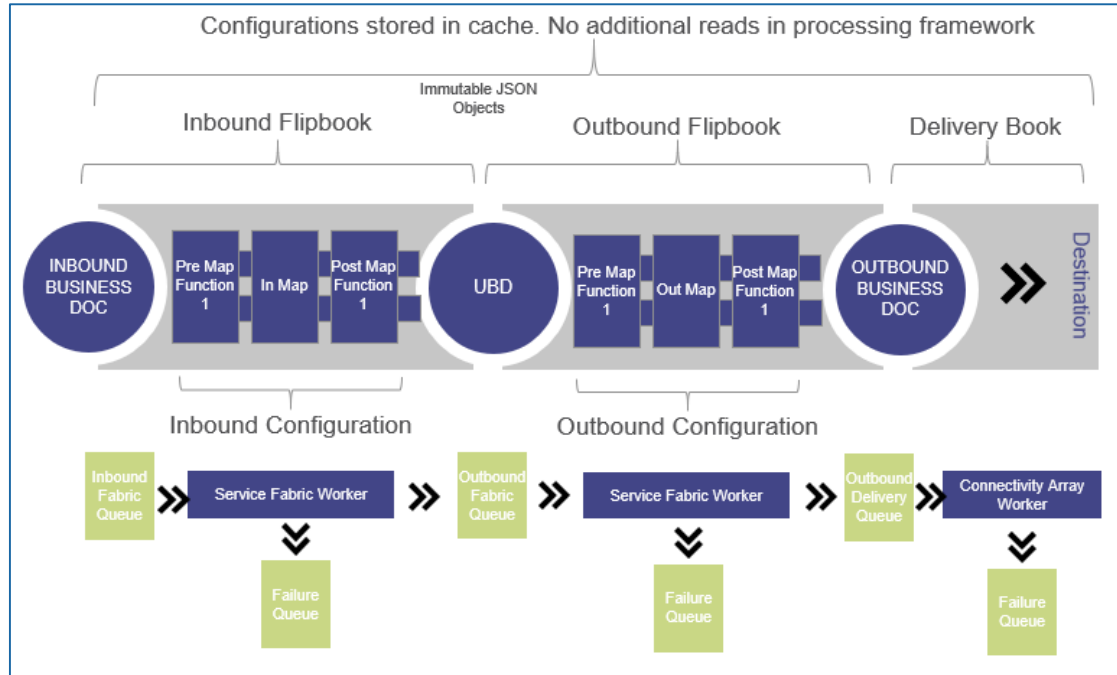


Blockchain Pilot Objectives

- Feasibility of employing a trustless, intermediary-free, decentralized standard to exchange information between different stakeholders
- Simplify existing business processes and make them smarter
 - Auto-matching of invoices
 - Auto-payments
 - Auto-ordering based on IoT information
 - Automated PO confirmations
 - Auto-invoice creation based on Pickup or PoD
- Extend to other complementary decentralized networks
 - Integrate information from IoT devices

Elemica is Like a Permissioned Private Blockchain

With OTC Business Functionality



Blockchain Security

- ✓ Secure and auditable
- ✓ Permissioned data read / write
- ✓ Managed access

Supply Chain Features

- ✓ Order to cash
 - ✓ Adapts to your customer ordering process
 - ✓ Full traceability and visibility
- ✓ Business process flexibility:
 - ✓ Discrete and process manufacturing
 - ✓ Quality and batch control
 - ✓ ECEMA and FDA requirements

Currently faster than using tradition blockchain technology. Much cheaper.

Has customer service and supply chain functions.

An aerial, high-angle photograph of a busy city intersection. The image is rendered in a light, desaturated grey tone. It shows multiple lanes of traffic, including cars, buses, and trucks, moving through the intersection. Pedestrians are visible on the sidewalks and crossing the streets. Buildings and trees are scattered around the perimeter of the intersection. The overall scene is one of a dense, active urban environment.

Acronyms and Buzz Words

Business Acronyms

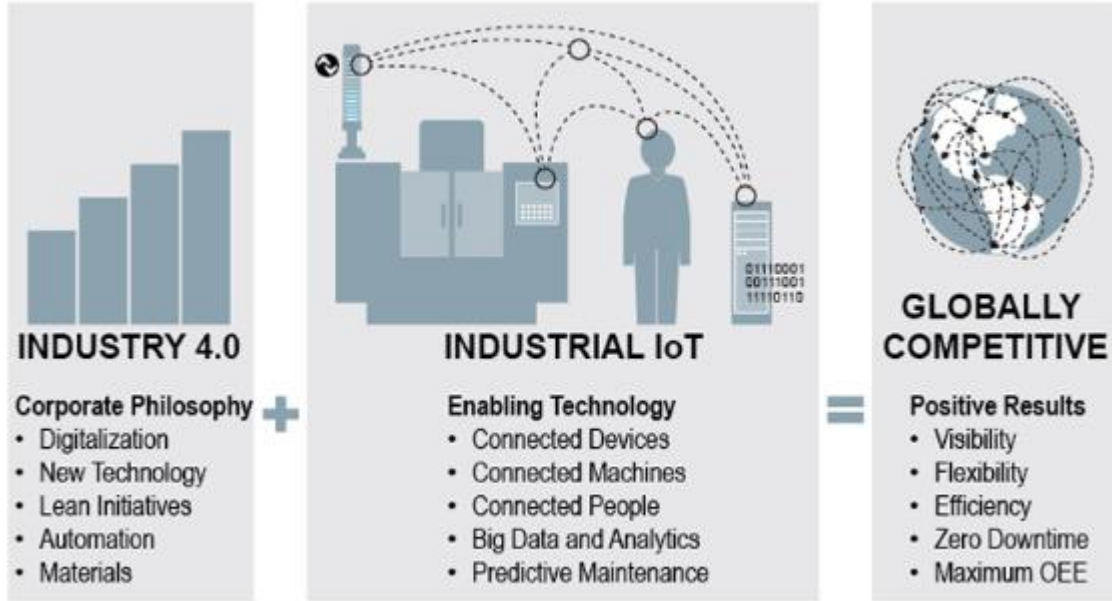


$$\text{V (VALUE)} = \frac{\text{Q (QUALITY)} + \text{S (SERVICE)}}{\text{\$ (COST)}}$$

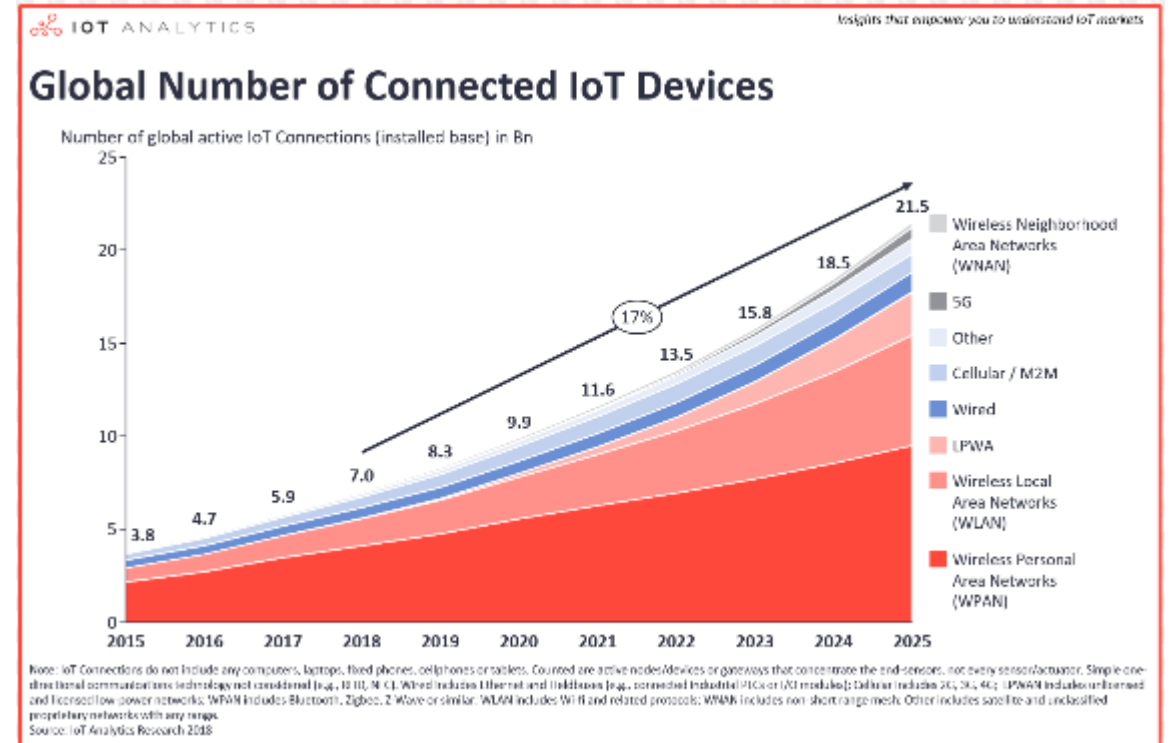
- *S&OP – sales and operations planning*
- *ROI, IRR, NPV, EBITDA – ways to express profit*
 - *Return on investment. Savings from a project divided by the cost of the project.*
 - *Internal rate of return. Another way to express ROI.*
 - *Net present value. Another way to express ROI.*
 - *Earnings before interest, tax, depreciation, & amortization.*

Internet of Things (IoT)

Component of Digital Transformation



Automation Insights



System connectivity



Different types of speaker wire

- *API – application programming interface*
- *AS2 – Applicability standard 2*
- *AS4 - Applicability standard 4*
- *Digital certificate –secures transmissions and identifies partners*
 - *These tend to be issued by ‘Certifying Authorities’ like Versign*
 - *Block chain is a digital certificate on steroids without a Certifying Authority*
- *FTP – file transfer protocol*
- *FTPs & sFTP - FTPsecure & secureFTP*
- *HTTP – Hyper Text Transfer Protocol*
- *HTTPS – Hyper Text Transfer Protocol Secure*
- *SSL – secure sockets layer. Technology to secure transmissions*
- *TLS – transport layer security*
- *Web service*

Ways to get data from one place to another reliably and securely.

EDI, IDOCs, XML

```
<?xml version="1.0"?>
<COND_A04>
  <IDOC BEGIN="1">
    <EDI_DC40 SEGMENT="1">
      <TABNAM>EDI_DC40</TABNAM>
      <MANDT>200</MANDT>
      <DOCNUM>0000000000006037</DOCNUM>
      <DOCREL>752</DOCREL>
      <STATUS>03</STATUS>
      <DIRECT>1</DIRECT>
      <OUTMOD>2</OUTMOD>
      <IDOCTYP>
```

- *EDI – electronic data interchange. Some examples:*
 - *X12 North American ANSI EDI standard*
 - *X12 3060 850 = purchase order (version 3060)*
 - *X12 4010 856 = ship notice (version 4010)*
 - *EDIFACT – EU EDI standard*
 - *UN/EDIFACT D96A ORDERS = purchase order (version 96a)*
 - *UN/EDIFACT D96A DESADV = ship notice (version 96b)*
 - *Others: EANCOM, HIPAA, ODETTE, SWIFT, Tradacoms, VDA, VICS, etc.*
- *Flat File*
- *IDOC – format SAP uses to transmit data*
 - *ORDER – a purchase order*
 - *SHPMNT – ship notices*
- *XML – a more modern form of EDI*
 - *Examples on next page...*

Data formats, or languages, programmers and systems can read.

XML Examples



- *AgGateway SPADE*
- *CIDX (Chemical Industry Data Exchange)*
- *GUSI (Global Upstream Supplier Initiative)*
- *IDOC (SAP IDOC without tags)*
- *IDOC XML (SAP IDOC with tags)*
- *ISOXML (International Organization for Standardization)*
- *PIDX (Petroleum Industry Data Exchange)*
- *PEPPOL (Pan European Public Procurement On-line)*
- *... many, many more*

Adding a new language will not increase standardization.

An aerial, high-angle photograph of a busy city intersection. The image shows multiple lanes of traffic, including cars, buses, and trucks. Pedestrians are visible on the sidewalks and crossing the streets. The overall scene is a complex urban environment with various road markings and traffic signals. The image is overlaid with a semi-transparent white layer, and the text is centered in a bold blue font.

**Results Driven Digital Transformation to
Improve Customer Service**

Sound Familiar?

Order processing is more difficult than ever due to data formats and data values.

Email & Auto-fax



EDI, IDOCs, & XML

```
<?xml version="1.0"?>
<COND_ID4>
  <IDOC BEGIN="1">
    <EDI_DC40 SEGMENT="1">
      <TABNAM>EDI_DC40</TABNAM>
      <MANDT>200</MANDT>
      <DOCNUM>0000000000000000037</DOCNUM>
      <DOCREL>722</DOCREL>
      <STATUS>03</STATUS>
      <DIRECT>1</DIRECT>
      <OUTMOD>2</OUTMOD>
    </EDI_DC40>
  </IDOC>
</COND_ID4>
```

Marketplaces



Customer Portals



Customers Lacking Systems



Manual Update



Elemica Digital Transformation Solutions



Elemica Buy

Onboard your raw material suppliers to optimize your procure-to-pay process, reducing inventory levels and increasing productivity

Products:

- Purchase Order Management
- Quicklink Email P2P
- Vendor Managed Inventory
- Delivery Forecast
- Invoice Compliance



gsqa

Elemica Quality

Improve quality and simplify compliance. Create information from COAs to drive decisions and improve processes.

Products:

- e-COA® Management
- Finished Goods Traceability
- Test Results and Graphics
- Pre-ship authorization
- Regulatory Reporting



Elemica Sell

Automate your complete order-to-cash process to reduce operating expenses, optimize working capital, and improve sales performance

Products:

- ENRICH
- Sales Order Management
- Customer Portal Assistant
- Quicklink Email SELL
 - OCR Module
- VMI & Delivery Schedule
- Invoice Compliance



Elemica Move

Collaborate with all of your logistics service providers to reduce freight costs, improve productivity and maintain shipper-of-choice status.

Products:

- Transport Execution
- Quicklink Email Move
- Freight Cost Management
- Terminal & Warehouse Visibility
- Timeslot Management



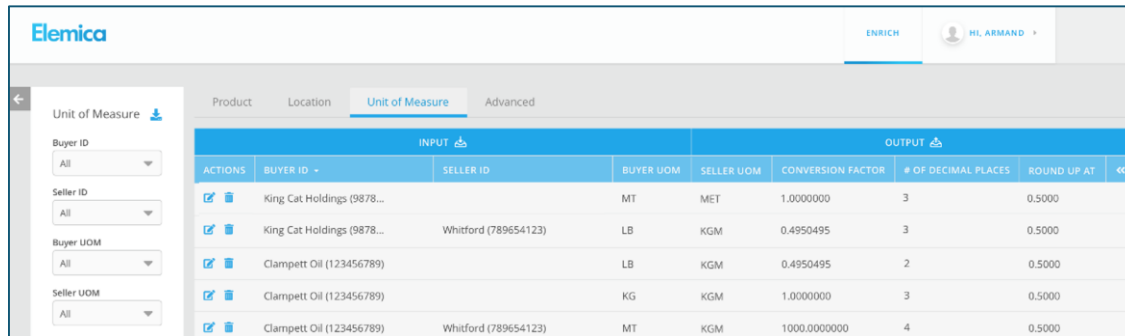
Elemica See

Unleash the power of a digital supply chain with visibility and exception management of your order-to-cash and procure-to-pay processes.

Products:

- Pulse
- Trace
- Risk

Features



The screenshot shows the Elemica ENRICH interface with a 'Unit of Measure' tab selected. On the left, there are dropdown menus for Buyer ID, Seller ID, Buyer UOM, and Seller UOM, all set to 'All'. The main table displays conversion data for various products and suppliers.

INPUT		OUTPUT					
ACTIONS	BUYER ID	SELLER ID	BUYER UOM	SELLER UOM	CONVERSION FACTOR	# OF DECIMAL PLACES	ROUND UP AT
	King Cat Holdings (9878...		MT	MET	1.0000000	3	0.5000
	King Cat Holdings (9878...	Whitford (789654123)	LB	KGM	0.4950495	3	0.5000
	Clampett Oil (123456789)		LB	KGM	0.4950495	2	0.5000
	Clampett Oil (123456789)		KG	KGM	1.0000000	3	0.5000
	Clampett Oil (123456789)	Whitford (789654123)	MT	KGM	1000.0000000	4	0.5000

EXAMPLE Conversion Supported

A customer orders in KGM using a single product ID. They want you to supply in either Drum or Bulk depending on the quantity.

- <10000 KGM is sold in 55 Gallon Drums (Supplier Product ID =A)
- >10000 KGM is sold in Bulk (Supplier Product ID = B)

A 3200 KGM order resolves to 12 Drums of Product A*

A 11000 KGM order resolves to 24,251 LBR of Product B

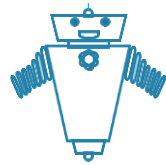
- ✓ Data pre-processing:
 - ✓ Location, product and UoM
 - ✓ Bulk to packaged
 - ✓ Packaging size increments
 - ✓ Volume based product cross-reference
- ✓ Business routing:
 - ✓ Sold to, sales org, and source plant determination
 - ✓ Route orders to the correct people
- ✓ Governance
 - ✓ Alerts and notifications
 - ✓ Audit control
 - ✓ Governance model
- ✓ Self-service management

Manage external customer data variability efficiently. Simplify internal PIM and PLM.

Customer Portal Assistant



Customers



PORTAL BOT



Elemica
Sell



API Interconnects
for Market Places



Features

- ✓ No need to go websites for orders
 - ✓ Reduce errors, accelerate payments
 - ✓ Increase CSR job satisfaction
 - ✓ Suppliers realize a 25% reduction in AR costs and 8.9% lower DSO*
- ✓ Less IT cost and pain.
 - ✓ No need for client to create, maintain, and staff a cXML infrastructure
 - ✓ Less IT focused on non-differentiating work
 - ✓ Lower on-going support costs

Customer Order Form - Email



1. Send Email

2. Click Link

3. Finalize Order

Features

- ✓ Customer and sales agent ordering app
 - ✓ Works on desktop, laptop, or mobile
 - ✓ Android, Apple, or Samsung
 - ✓ Multiple security layers
- ✓ Fast easy ordering
 - ✓ ***Easier than Amazon!***
 - ✓ No usernames, passwords, or registration
 - ✓ No screens to navigate
- ✓ Self-service administration
 - ✓ Setup delivery locations and products
 - ✓ Send the buyer the ordering email address
- ✓ Benefits
 - ✓ Cost effective, pervasive automation
 - ✓ Added level of customer service
 - ✓ More responsive field service support

Customer Order Form - Text

1. Send Text
2. Finalize Order
3. Get confirmation



Features

- ✓ Customer and sales agent ordering app
 - ✓ Works on Android, Apple, or Samsung
 - ✓ Multiple security layers
- ✓ Fast easy ordering
 - ✓ **Easier than Amazon!**
 - ✓ No usernames, passwords, or registration
 - ✓ No screens to navigate
- ✓ Self-service administration
 - ✓ Setup delivery locations and products
 - ✓ Send the buyer the ordering email address
- ✓ Benefits
 - ✓ Cost effective, pervasive automation
 - ✓ Added level of customer service
 - ✓ More responsive field service support

OCR Module for QLE Sell



MyValidator
Kruger Smoothing_AAA
20181126NB1 2018-11-26 1:56:10 PM
Open Files

Please correct this error
PO Number: 20181126NB1 PO Number: 20181126NB1
Re-Process Add Split Delete

Document Status Labels Tools

An unexpected value was captured for the Document Number. Please make any necessary changes.

Kruger Smoothing
PO Box 24530
Maple Shade, NJ 08025
Phone: 6092889000
Fax: 6092899001

PURCHASE ORDER PO Number: 20181126NB1
PO Issue date: 11/26/2018
Vendor: Muller Distribution
563 Old Mill Road
Pittsburgh, PA 15238
Phone: 4129198102
Fax: 4129198110
Email: gne@kruger.com

Ship to: Receiving Dock D
1324 Oak Way
Maple Shade, NJ 08052

Delivery Date: 11/26/2018
TERMS: FOB

Special Instructions: Nick Brown must approve. 8888888888

Line	QTY	UoM	P/N	Description	Del	Price	Extended
0010	100.00	EA	195143	Brown - L10	11/29/2018	\$ 7.15	\$ 715.00
Notes:							
0020	10.00	EA	191204	Brown - L20	11/29/2018	\$ 17.15	\$ 171.50
Notes:							
0030							
Notes:							

Special Instructions: Nick Brown must approve. 8888888888

Line	QTY	UoM	P/N	Description	Del	Price	Extended
0010	100.00	EA	195143	Brown - L10	11/29/2018	\$ 7.15	\$ 715.00
Notes:							
0020	10.00	EA	191204	Brown - L20	11/29/2018	\$ 17.15	\$ 171.50
Notes:							
0030							
Notes:							

1 / 1 >

Approve Close

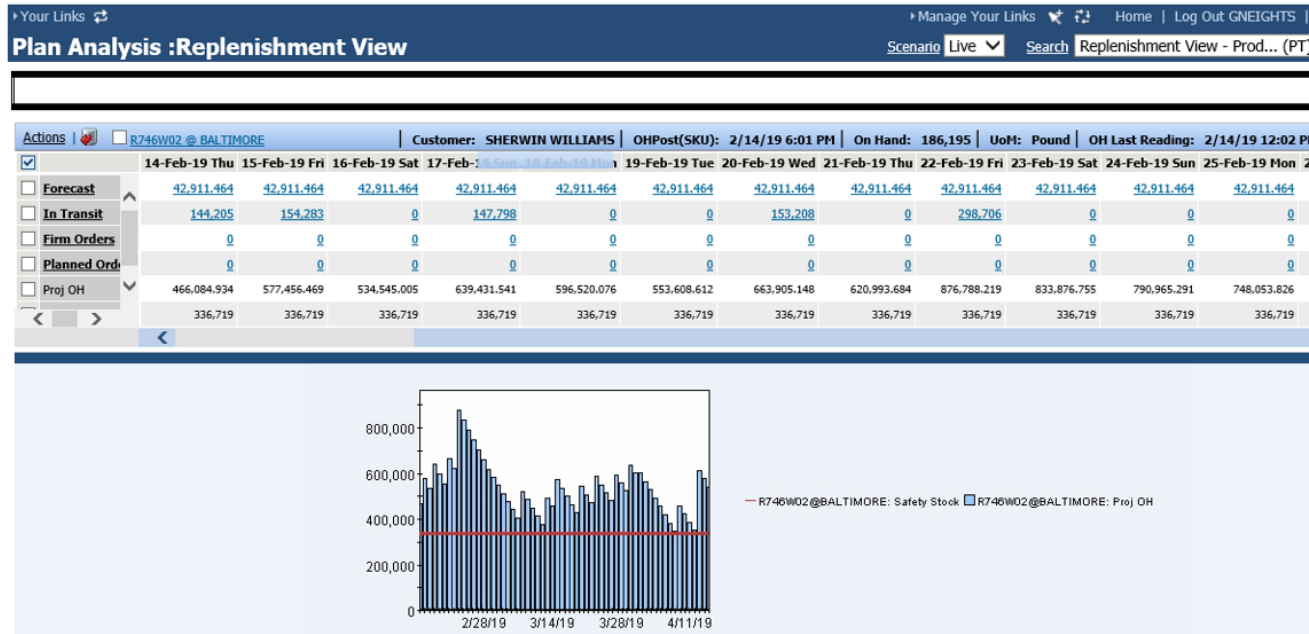
Features

- ✓ Optical character recognition
 - ✓ Convert images to text
- ✓ Error correction
 - ✓ Resolve 8/B, 0/O, I/I/1/!, etc. inaccuracies
 - ✓ Check sums
- ✓ Easy to use workflow
 - ✓ Potential issues are highlighted for resolution
 - ✓ Typically less than 2 minutes per order

Email & Auto-fax



VMI: Vendor Managed Inventory



Features

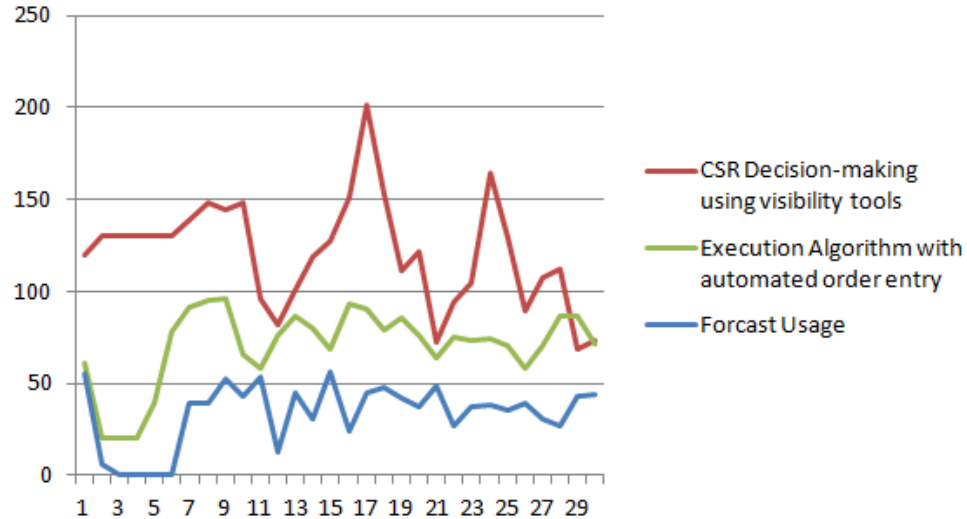
- ✓ Multi-party data processing
 - ✓ Customer demand
 - ✓ Automated Inventory Status connectivity
 - ✓ w WMS, telemetry, IoT, etc.
 - ✓ Supplier order processing status
 - ✓ Carrier shipment status
 - ✓ Proof of delivery
- ✓ Advanced algorithms
 - ✓ Lead times, shipment sizes, and calendars
 - ✓ Static or floating safety stock
 - ✓ Multi-echelon (intermediate stocking points)
- ✓ Order generation
 - ✓ Hands-free (tends to have best performance)
 - ✓ Monitored (may have human induced swings)

VMI Value



VMI on high volume customer tanks predicts a savings of nearly **6% in total mileage** driven and **12% fewer total delivery trips**. This savings is achieved through superior truck utilization on routes services by VMI, where the **total mileage required is estimated to be 10% lower** than under the current system.

Vendor Managed Inventory vs. Order Based Fulfillment in a Specialty Chemical Company
Dimitrios Andritsos and Anthony Craig
MIT



Source: Supply Chain Council Presentation on Elemica VMI April 9th, 2013

VMI Value

- Working Capital:
 - Inventory reduced by 41%
 - EUR 24,000 per year:
 - 8% cost of capital
 - 33,200 KGM / Day
 - 7 EUR / KGM
- Visibility to stock levels

Delivery Schedule



DS_22_Snapshot_CompWS

Scenario: Live Search: DS_Buyer_Product_ID_PIP (PT)

Buyer Product ID:Delfor_Product_001 Ship To:Delfor_ST_001 Unloading PT:NA

Seller DUNS	Seller DUNS Name	Buyer DUNS	Buyer DUNS Name	Partner Seller ID	Partner Seller Name	Partner Buyer ID	Partner Buyer Name
981254014	Z_Chem MANU Seller	981254013	Z_Chem MANU Buyer	1234	ChemCo-Seller	Delfor_ST_001	ChemCo-Buyer2

DS_17_Snapshot_Results DS_18_SS_Import_Firm_Match_Settings DS_19_SS_Ref_Val_&_ShipNotice_Settings DS_20_SS_Export_Settings

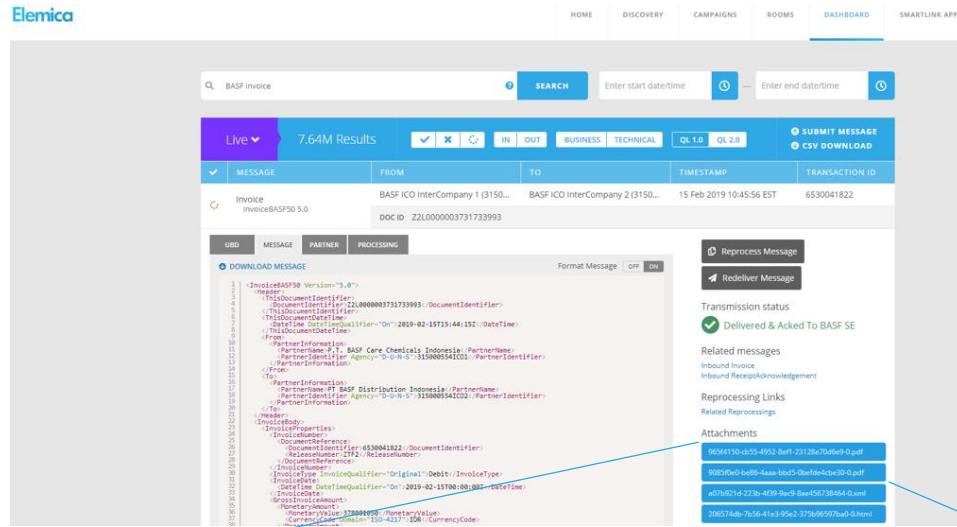
Process ID:170 Buyer Product ID:Delfor_Product_001 Ship To:Delfor_ST_001 Unloading PT:NA

Import Date	PO	Release #	DFC Line Status	Sched Del Date	Order Qty	Match Results	OC Doc ID	OC Doc Date	OCH Doc ID	OCH Doc Date
10/12/13 18:28	118560918	1,037	Firm	10/21/13 00:00	20,000	MATCHED	DELSCHED_OC_465	10/1/13 18:01	DELSCHED_OCH_467	10/5/13 18:09
10/12/13 18:28	118560918	1,038	Firm	10/24/13 00:00	24,000	MATCHED	DELSCHED_OC_466	10/1/13 18:01		
10/12/13 18:28	118560918	1,039	Firm	10/29/13 00:00	21,000	ORDER CREATE	DELSCHED_OC_470	10/12/13 18:29		

Features

- ✓ Schedule Line Processing
 - ✓ Convert difficult to process schedule lines into orders or changes
 - ✓ Upon shipment, orders frozen
- ✓ Flexible Configurations
 - ✓ At the product-location level
 - ✓ Firm flags and/or frozen zones
 - ✓ Order create lead times
 - ✓ Order change lead times
 - ✓ Auto-setup defaults at the location level
- ✓ Business Friendly Alerting
 - ✓ Notify customers or CSRs if inside freeze zones
 - ✓ Alert upon auto-setup

Invoice Compliance



Features

- ✓ Invoice Signatures and Archive
 - ✓ EU-compliant signatures by Sovos TrustWeaver
 - ✓ EU-hosted compliant archive
- ✓ Business Controls
 - ✓ Auditable, compliant system
- ✓ Invoice Clearance Support
 - ✓ Custom integration of shipping documents and invoices to meet country specific requirements for prior invoice approval

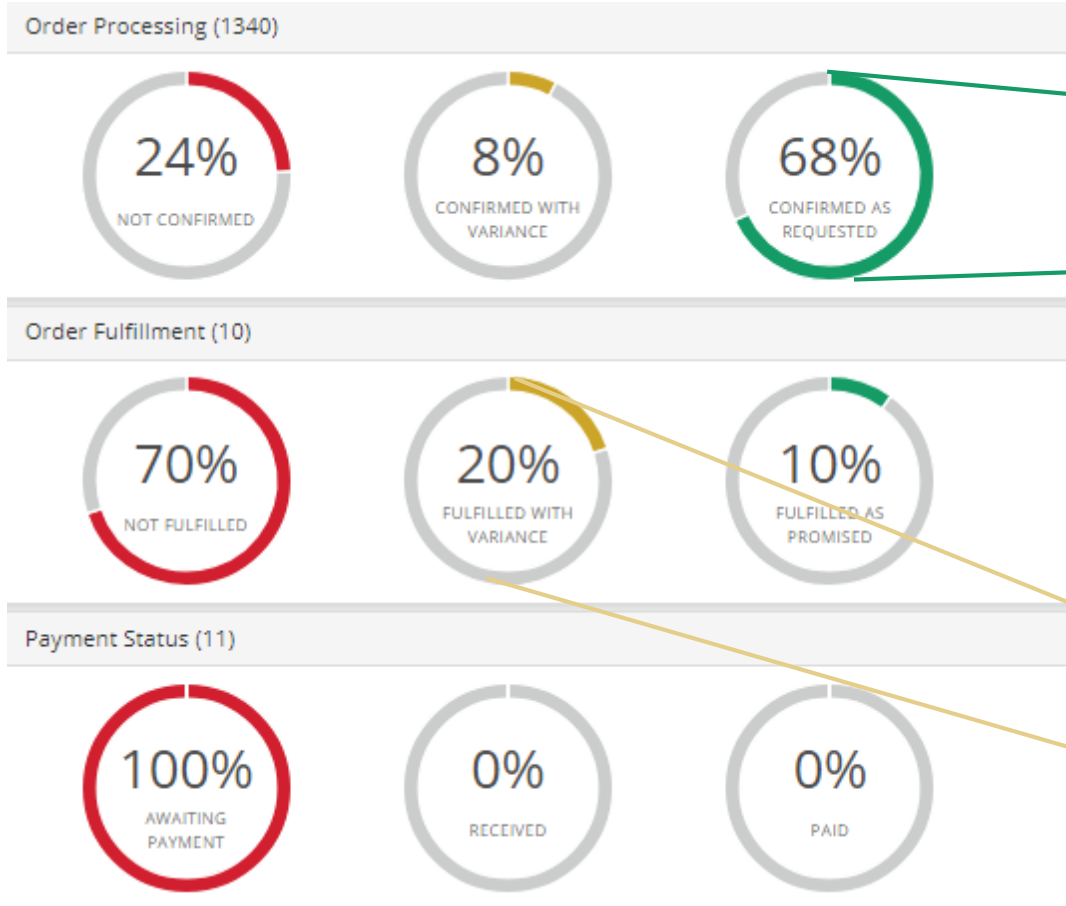


Human Readable Compliant Invoice

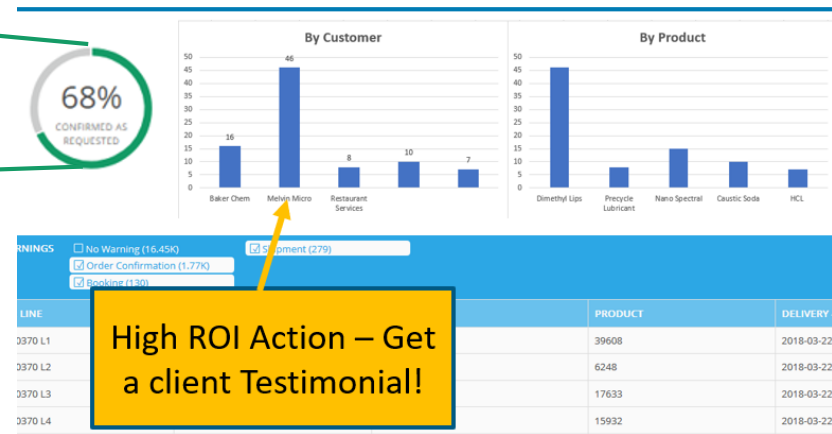


Electronic Signature for Business Control

Customer Service Dashboard



Drill Down



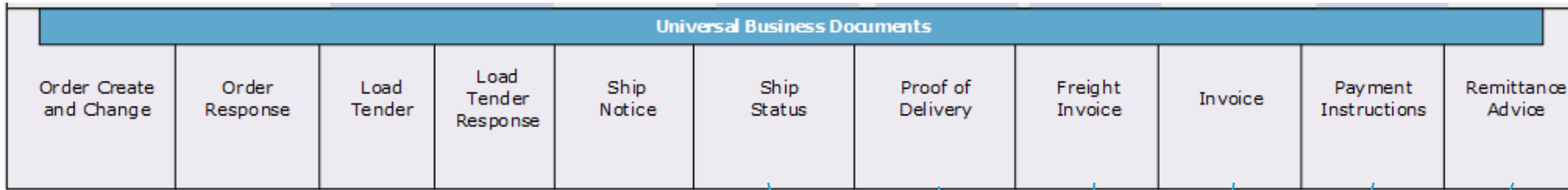
High ROI Action – Get a client Testimonial!

Drill Down



High ROI Action – Investigate product.

Business Visibility and Alerting



Search by:

- PO#
- Product ID
- Sales Order #
- Shipment ID
- Carrier
- Invoice Number

4500226813 SEARCH

1 WARNINGS No Warning (0) Shipment (1)

BUYER	SUPPLIER	DELIVERY	ORDER LINE	PRODUCT	SHIP TO	WARNING TYPE	STATUS
CP-D	Univar Ltd - Cadishead,,	2017-03-29	4500226813 L00010	BUTYL GLYCOL (BG) 1K BLK	Univar Ltd - Cadishead	Shipment	Ship Notice Mismatch

✓	MILESTONE	TIMESTAMP		BASELINE VALUE	COMPARISON VALUE
✓	Order Created	2017-03-21 10:34:34 UTC		Requested Quantity: 27000 KILOGRAM(S) Requested Delivery Date: 2017-03-29	
✓	Order Confirmed	2017-03-21 10:39:20 UTC		Requested Quantity: 27000 KILOGRAM(S) Requested Delivery Date: 2017-03-29	Confirmed Quantity: 27000 KILOGRAM(S) Confirmed Delivery Date: 2017-03-29
✓	Order Confirmed	2017-03-21 10:44:26 UTC		Requested Quantity: 27000 KILOGRAM(S) Requested Delivery Date: 2017-03-29	Confirmed Quantity: 27000 KILOGRAM(S) Confirmed Delivery Date: 2017-03-29
✓	Transport Requested	2017-03-21 11:17:10 UTC	CARRIER PANALON MULTIMODAL S. A.	Requested Delivery Date: 2017-03-29	Estimated Delivery Date: 2017-03-29
✗	Transport Requested	2017-03-22 13:53:16 UTC	CARRIER PANALON MULTIMODAL S. A.	Requested Delivery Date: 2017-03-29	Estimated Delivery Date: 2017-03-31

BOOKING ETA IS 2 DAYS LATER THAN REQUESTED BY PO.

✗	MILESTONE	TIMESTAMP	CARRIER	BASELINE VALUE	COMPARISON VALUE
✗	Shipped	2017-03-23 08:49:20 UTC	PANALON MULTIMODAL S. A.	Requested Quantity: 27000 KILOGRAM(S) Requested Delivery Date: 2017-03-29	Shipped Quantity: 26980 KILOGRAM(S) Estimated Delivery Date: 2017-03-31

SHIPMENT QUANTITY IS 20 KILOGRAM(S) LESS THAN REQUESTED. SHIPMENT IS EXPECTED TO ARRIVE 2 DAYS LATER THAN REQUESTED.

DISMISS ALERT

Trace: Real Time Shipment Tracking w “GPS” Signal Capture providing Predictive ETA Calculations



Live ▾ 1 Shipments

ALL GPS ONLY ON-TIME STATUS
 Expected Late (0) On-Time (0) Late (1) No Data (0)
 CSV DOWNLOAD

MODE	STATUS	DELIVERY NOTE	SHIPPER	CARRIER	SHIPMENT NUMBER	PICKUP	DELIVERY	ORIGIN	DESTINATION	ON-TIME STATUS
Road	Delivered	3191395785	BASF SE	Roos Spedition GmbH (4394...	2605306571	2019-02-11 00:00:00	2019-02-12 08:30:00	Ludwigshafen	SULLY SUR LOIRE	▲ Late

ROUTE PROGRESS
ACTIVITY ⓘ
CONTACTS
GPS

- Arrived at Pick-up Location ✓ 2019-02-11 10:39:00
- Departed Pick-up Location ✓ 2019-02-11 14:31:00
- En Route 🕒 2019-02-12 09:15:00

Delivery Note #3191395785

CARRIER INPUT
Status: en route
Reason: carrier related deviation (earlier / late delivery)

REQUESTED DELIVERY	2019-02-12 08:30:00
CARRIER ESTIMATED DELIVERY	2019-02-12 08:18:00
ELEMICA CALCULATED DELIVERY	2019-02-12 09:19:15
CARRIER ACTUAL DELIVERY	

- Arrived at Delivery Location 🕒 2019-02-12 09:22:00
- Delivery Completed ⚠️ 2019-02-12 13:43:00

Refresh
Full Screen



Q&A